



EJ DK ÁRAMLÁSMÉRŐ - 3750

MT3750C Típus

MT3750C

BROOKS
INSTRUMENT

- Rozsdamentes acél test
- 100 l / h-ig
- Magas hőmérséklet és magas nyomás
- Hőmérséklet 204 ° C-ig
- Nyomás 276 bar-ig



TERMÉKLEÍRÁS

A Brooks® Ar-Mite MT3750C egy megbízható, alacsony áramlású fémcső-áramlásmérő, ahol a közeggel érintkező részek 316L rozsdamentes acélból készülnek.

A mágnesesen összekapcsolt indikátor nagyon megbízható módszert kínál a kijelzéshez. Ez a modell praktikus és gazdaságos választás az alacsony áramláshoz magas nyomáson/magas hőmérsékleten, és különösen agresszív folyadékok kezelésekor. A 4–20 mA kimeneti jelű távadó opciója, be- vagy kimeneti túszelep, áramlásszabályozó vagy riasztó is elérhető.

Megrendelésével és bővebb felvilágosításért forduljon Bjarne Österberghez a bjarne.osterberg@oemautomatic.se e-mail címen vagy a +46 075 242 4251-es telefonszámon.

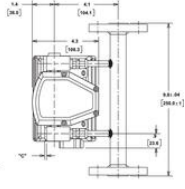
Model: 3759C	
AR-MITE ARMORED PURGE FLOWMETER	
BASE MODEL NUMBER	ARMORED PURGE FLOWMETER
3759C	1/1 MM
MATERIAL SPECIFICATION	
1	316L STN. STL. & CON. CERTIFICATION
2	316L STN. STL. CON. CERTIFICATION & CERTIFIED MATERIAL TO EN 2.2
3	316L STN. STL. CON. CERTIFICATION & CERTIFIED MATERIAL TO EN 2.1
4	316L STN. STL. CON. CERTIFICATION & SECTION IX WELDING
5	316L STN. STL. CON. CERTIFICATION & CERTIFIED MATERIAL TO EN 2.2 / SECTION IX WELDING
6	316L STN. STL. CON. CERTIFICATION & CERTIFIED MATERIAL TO EN 2.1 / SECTION IX WELDING
A	316L STN. STL.
B	316L STN. STL. CERTIFIED MATERIAL TO EN 2.2
C	316L STN. STL. CERTIFIED MATERIAL TO EN 2.1
D	316L STN. STL. WITH SECTION IX WELDING
E	316L STN. STL. CERTIFIED MATERIAL TO EN 2.2 / SECTION IX WELDING
F	316L STN. STL. CERTIFIED MATERIAL TO EN 2.1 / SECTION IX WELDING
G	316L STN. STL.
METER SIZE	
0	SIZE 0
1	SIZE 1
2	SIZE 2
3	SIZE 3
4	SIZE 4
5	SIZE 5
6	SIZE 6
CONSTRUCTION	
SEALS	
A	STANDARD DESIGN VITON O-RINGS
B	STANDARD DESIGN TEFLOON O-RINGS/NO VALVE ONLY
C	STANDARD DESIGN BUNA O-RINGS
D	STANDARD DESIGN KALREX O-RINGS (WITH VALVE)
E	STANDARD DESIGN KALREX O-RINGS (WITHOUT VALVE)
F	STANDARD DESIGN EPDM O-RINGS
G	STANDARD DESIGN TEFLOON IN WELDS AND VALVE IN VALVE
H	ALL WELDED / HIGH PRESSURE NO FLASK COVER, NO VALVE CAVITY
CONNECTION SIZE AND TYPE	
1	1/4" NPT (F) - INTERNAL
2	1/4" TUBE CONNECTION - WITH ADAPTER
3	3/8" TUBE CONNECTION - WITH ADAPTER
4	1/2" NPT (F) - WITH ADAPTER
5	1/2" NPT (F) - WITH ADAPTER
6	1/2" NPT (F) - WITH ADAPTER
A	1/2" ANSI 1504 RF FLANGE - VERTICAL ONLY
B	1/2" ANSI 3004 RF FLANGE - VERTICAL ONLY
C	1/2" ANSI 4004 RF FLANGE - VERTICAL ONLY
D	3/4" ANSI 1504 RF FLANGE - VERTICAL ONLY
E	3/4" ANSI 3004 RF FLANGE - VERTICAL ONLY
F	3/4" ANSI 4004 RF FLANGE - VERTICAL ONLY
G	1" ANSI 1504 RF FLANGE - VERTICAL ONLY
H	1" ANSI 3004 RF FLANGE - VERTICAL ONLY
J	1" ANSI 4004 RF FLANGE - VERTICAL ONLY
K	CON/TA 15 FRASE RF FLANGE - VERTICAL ONLY
L	CON/TA 20 FRASE RF FLANGE - VERTICAL ONLY
M	CON/TA 30 FRASE RF FLANGE - VERTICAL ONLY
CONNECTION ORIENTATION	
1	HORIZONTAL INLET AND OUTLET (THREADED CONNECTIONS ONLY)
2	VERTICAL INLET & OUTLET (THREADED CONNECTIONS ONLY)
VALVE CONFIGURATION	
A	NO VALVE (STANDARD FITTING WITH FLG)
B	LOW FLOW VALVE ON INLET TYPICAL FOR SIZES 5, 1, 2
C	MEDIUM FLOW VALVE ON INLET TYPICAL FOR SIZES 3, 4
D	HIGH FLOW VALVE ON INLET TYPICAL FOR SIZES 5, 6, 6
E	NO VALVE CAVITY ALL WELDED / HIGH PRESSURE ONLY
K	NO VALVE - SIZE 0 ON INLET TYPICAL FOR SIZE 0
L	NO VALVE - SIZE 4 ON INLET TYPICAL FOR SIZE 2
M	NO VALVE - SIZE 4 ON INLET TYPICAL FOR SIZE 3
N	NO VALVE - SIZE 4 ON INLET TYPICAL FOR SIZE 4 & 5

ACCURACY	RESOLUTION	UNIT
0.1	0.01	mA
0.2	0.02	mA
0.5	0.05	mA
1.0	0.10	mA
2.0	0.20	mA
5.0	0.50	mA
10.0	1.00	mA
20.0	2.00	mA
50.0	5.00	mA
100.0	10.00	mA
200.0	20.00	mA
500.0	50.00	mA
1000.0	100.00	mA
2000.0	200.00	mA
5000.0	500.00	mA
10000.0	1000.00	mA
20000.0	2000.00	mA
50000.0	5000.00	mA
100000.0	10000.00	mA
200000.0	20000.00	mA
500000.0	50000.00	mA
1000000.0	100000.00	mA
2000000.0	200000.00	mA
5000000.0	500000.00	mA
10000000.0	1000000.00	mA
20000000.0	2000000.00	mA
50000000.0	5000000.00	mA
100000000.0	10000000.00	mA
200000000.0	20000000.00	mA
500000000.0	50000000.00	mA
1000000000.0	100000000.00	mA
2000000000.0	200000000.00	mA
5000000000.0	500000000.00	mA
10000000000.0	1000000000.00	mA
20000000000.0	2000000000.00	mA
50000000000.0	5000000000.00	mA
100000000000.0	10000000000.00	mA
200000000000.0	20000000000.00	mA
500000000000.0	50000000000.00	mA
1000000000000.0	100000000000.00	mA
2000000000000.0	200000000000.00	mA
5000000000000.0	500000000000.00	mA
10000000000000.0	1000000000000.00	mA
20000000000000.0	2000000000000.00	mA
50000000000000.0	5000000000000.00	mA
100000000000000.0	10000000000000.00	mA
200000000000000.0	20000000000000.00	mA
500000000000000.0	50000000000000.00	mA
1000000000000000.0	100000000000000.00	mA
2000000000000000.0	200000000000000.00	mA
5000000000000000.0	500000000000000.00	mA
10000000000000000.0	1000000000000000.00	mA
20000000000000000.0	2000000000000000.00	mA
50000000000000000.0	5000000000000000.00	mA
100000000000000000.0	10000000000000000.00	mA
200000000000000000.0	20000000000000000.00	mA
500000000000000000.0	50000000000000000.00	mA
1000000000000000000.0	100000000000000000.00	mA
2000000000000000000.0	200000000000000000.00	mA
5000000000000000000.0	500000000000000000.00	mA
10000000000000000000.0	1000000000000000000.00	mA
20000000000000000000.0	2000000000000000000.00	mA
50000000000000000000.0	5000000000000000000.00	mA
100000000000000000000.0	10000000000000000000.00	mA
200000000000000000000.0	20000000000000000000.00	mA
500000000000000000000.0	50000000000000000000.00	mA
1000000000000000000000.0	100000000000000000000.00	mA
2000000000000000000000.0	200000000000000000000.00	mA
5000000000000000000000.0	500000000000000000000.00	mA
10000000000000000000000.0	1000000000000000000000.00	mA
20000000000000000000000.0	2000000000000000000000.00	mA
50000000000000000000000.0	5000000000000000000000.00	mA
100000000000000000000000.0	10000000000000000000000.00	mA
200000000000000000000000.0	20000000000000000000000.00	mA
500000000000000000000000.0	50000000000000000000000.00	mA
1000000000000000000000000.0	100000000000000000000000.00	mA
2000000000000000000000000.0	200000000000000000000000.00	mA
5000000000000000000000000.0	500000000000000000000000.00	mA
10000000000000000000000000.0	1000000000000000000000000.00	mA
20000000000000000000000000.0	2000000000000000000000000.00	mA
50000000000000000000000000.0	5000000000000000000000000.00	mA
100000000000000000000000000.0	10000000000000000000000000.00	mA
200000000000000000000000000.0	20000000000000000000000000.00	mA
500000000000000000000000000.0	50000000000000000000000000.00	mA
1000000000000000000000000000.0	100000000000000000000000000.00	mA
2000000000000000000000000000.0	200000000000000000000000000.00	mA
5000000000000000000000000000.0	500000000000000000000000000.00	mA
10000000000000000000000000000.0	1000000000000000000000000000.00	mA
20000000000000000000000000000.0	2000000000000000000000000000.00	mA
50000000000000000000000000000.0	5000000000000000000000000000.00	mA
100000000000000000000000000000.0	10000000000000000000000000000.00	mA
200000000000000000000000000000.0	20000000000000000000000000000.00	mA
500000000000000000000000000000.0	50000000000000000000000000000.00	mA
1000000000000000000000000000000.0	100000000000000000000000000000.00	mA
2000000000000000000000000000000.0	200000000000000000000000000000.00	mA
5000000000000000000000000000000.0	500000000000000000000000000000.00	mA
10000000000000000000000000000000.0	1000000000000000000000000000000.00	mA
20000000000000000000000000000000.0	2000000000000000000000000000000.00	mA
50000000000000000000000000000000.0	5000000000000000000000000000000.00	mA
100000000000000000000000000000000.0	10000000000000000000000000000000.00	mA
200000000000000000000000000000000.0	20000000000000000000000000000000.00	mA
500000000000000000000000000000000.0	50000000000000000000000000000000.00	mA
1000000000000000000000000000000000.0	100000000000000000000000000000000.00	mA
2000000000000000000000000000000000.0	200000000000000000000000000000000.00	mA
5000000000000000000000000000000000.0	500000000000000000000000000000000.00	mA
10000000000000000000000000000000000.0	1000000000000000000000000000000000.00	mA
20000000000000000000000000000000000.0	2000000000000000000000000000000000.00	mA
50000000000000000000000000000000000.0	5000000000000000000000000000000000.00	mA
100000000000000000000000000000000000.0	10000000000000000000000000000000000.00	mA
200000000000000000000000000000000000.0	20000000000000000000000000000000000.00	mA
500000000000000000000000000000000000.0	50000000000000000000000000000000000.00	mA
1000000000000000000000000000000000000.0	100000000000000000000000000000000000.00	mA
2000000000000000000000000000000000000.0	200000000000000000000000000000000000.00	mA
5000000000000000000000000000000000000.0	500000000000000000000000000000000000.00	mA
10000000000000000000000000000000000000.0	1000000000000000000000000000000000000.00	mA
20000000000000000000000000000000000000.0	2000000000000000000000000000000000000.00	mA
50000000000000000000000000000000000000.0	5000000000000000000000000000000000000.00	mA
100000000000000000000000000000000000000.0	10000000000000000000000000000000000000.00	mA
200000000000000000000000000000000000000.0	20000000000000000000000000000000000000.00	mA
500000000000000000000000000000000000000.0	50000000000000000000000000000000000000.00	mA
1000000000000000000000000000000000000000.0	100000000000000000000000000000000000000.00	mA
2000000000000000000000000000000000000000.0	200000000000000000000000000000000000000.00	mA
5000000000000000000000000000000000000000.0	500000000000000000000000000000000000000.00	mA
100.0	1000000000000000000000000000000000000000.00	mA
200.0	2000000000000000000000000000000000000000.00	mA
500.0	5000000000000000000000000000000000000000.00	mA
1000.0	100.00	mA
2000.0	200.00	mA
5000.0	500.00	mA
100.0	1000.00	mA
200.0	2000.00	mA
500.0	5000.00	mA
1000.0	100.00	mA
2000.0	200.00	mA
5000.0	500.00	mA
100.0		

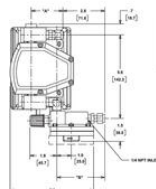
MT3750 STANDARD CONNECTION



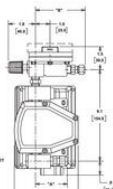
MT3750 WITH FLANGE CONNECTION



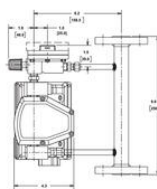
MT3750 WITH 8800 SERIES



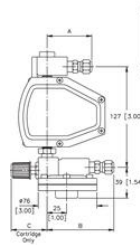
MT3750 WITH 8900 SERIES



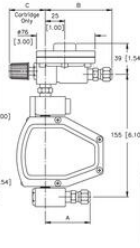
MT3750 WITH 88/8900 SERIES FLANGED CONNECTION



MT3750 WITH 8800 SERIES



MT3750 WITH 8900 SERIES



MT3750 WITH 88/8900 SERIES FLANGED CONNECTION

