



# MHM5 ÉRZÉKELŐ

## MHM510-PROF-001

- Felbontás max. 25 bites; 13 bit a felbontáshoz és 12 bites a fordulathoz
- CANopen, DeviceNet, Ethercat, Ethernet / IP, Interbus, Modbus, Párhuzamos, Profibus, Profinet
- IP64, opcionális IP66



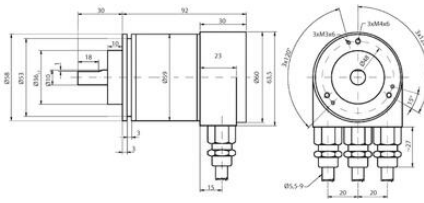
### TERMÉKLEÍRÁS

### MŰSZAKI ADATOK

<b>Befoglalási átmérő</b>	58 mm
<b>Csatlakozás</b>	Csavaros csatlakozás
<b>Érzékelő típusa</b>	Abszolút
<b>IP-osztály</b>	IP64
<b>Kilépés</b>	Profibus
<b>Max. sebesség</b>	6000 rpm
<b>Max. tápfeszültség, DC</b>	30 V DC
<b>Max. üzemi hőmérséklet</b>	85 °C
<b>Min. tápfeszültség, DC</b>	10 V DC
<b>Min. üzemi hőmérséklet</b>	-40 °C
<b>Tengelyátmérő</b>	10 mm
<b>Verzió</b>	Többmenetes

#### PROGRAMMABLE PARAMETERS

Operating Parameter	This parameter determines the counting direction, in which the output code increases or decreases. As an important operating parameter the code sequence (complement) can be programmed.
Resolution per turn	Value between 1 and 8192 can be programmed.
Total resolution "Max range"	This parameter is used to program the desired number of measuring units over the total measuring range. This value may not exceed the total resolution of the absolute rotary encoder.
Preset Value	The preset value is the desired position value, which should be reached at a certain physical position of the cam.
Limit Switch, Min. and Max.	Two position values can be programmed as limit switches. By reaching these values one bit of the 32 bit process value is set to high level.
Cam	One free programmable cam can be set in the total measuring range.



#### PROGRAMMABLE PARAMETERS

Operating Parameters	This parameter determines the counting direction in which the output code increases or decreases. As an important operating parameter the code sequence (complement) can be programmed
Resolution per turn	Value between 1 and 8192 can be programmed
Total resolution "Max range"	This parameter is used to program the desired number of measuring units over the total measuring range. This value may not exceed the total resolution of the absolute rotary encoder.
Preset Value	The preset value is the desired position value, which should be reached at a certain physical position of the cam
Limit Switch, Min. and Max	Two position values can be programmed as limit switches. By reaching these values one bit of the 32 bit process value is set to high level
Cam	One free programmable cam can be set in the total measuring range

